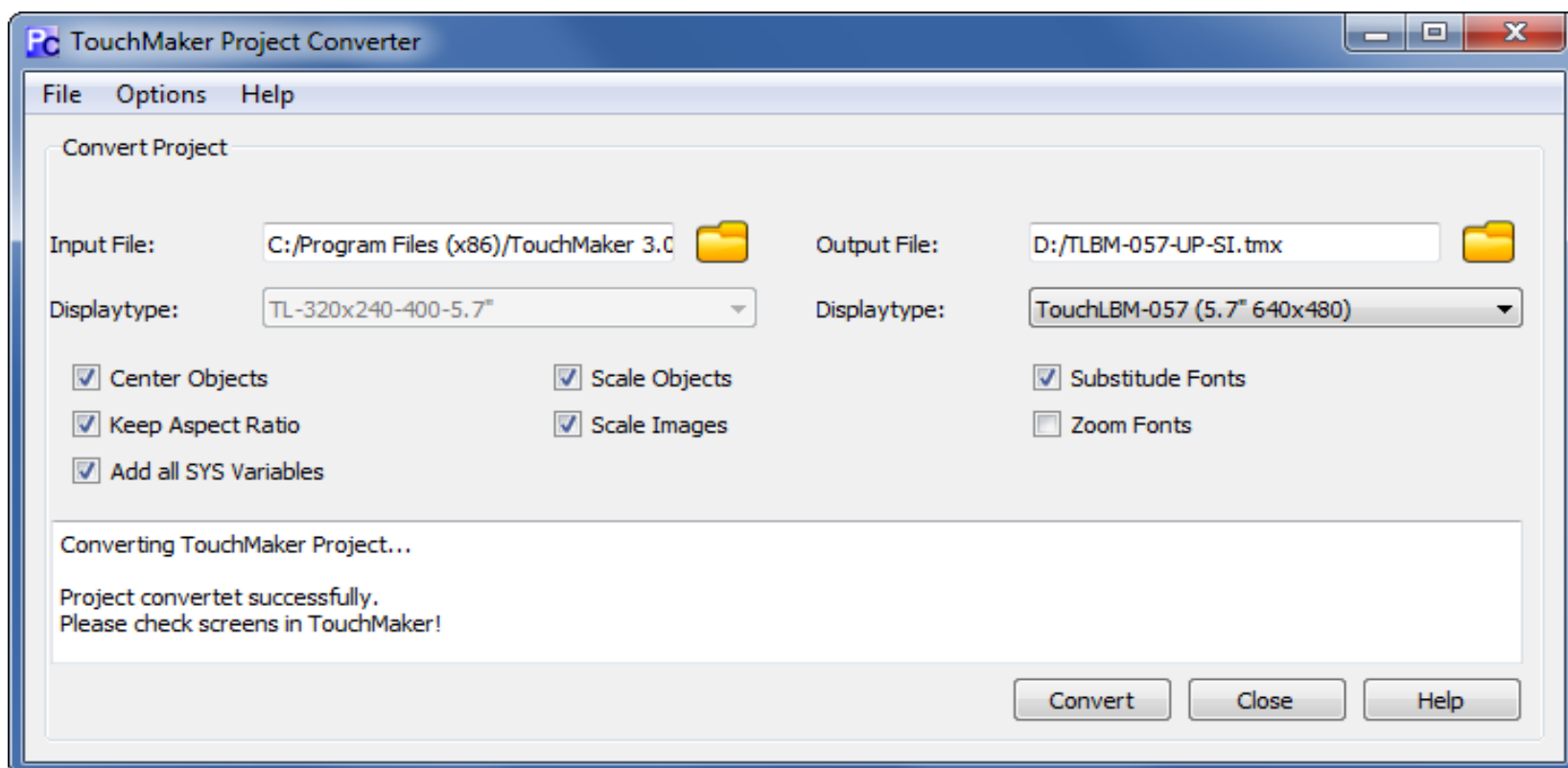


# TouchMaker Project Converter® Help 1.2



**Der TouchMaker Project Converter®** is a comfortable software tool to convert projects for PASStec TouchLBM devices between different device types. To do this there are some settings for changing size of objects, images or texts. This software should be used to support converting projects. Converted projects should be checked before running inside the TouchMaker software to avoid problems.

- ▶ **Input File** Set an existing TouchMaker project for converting.
- ▶ **Output File** Set a new file to save converted TouchMaker project.
- ▶ **Displaytype** The used display type is set by the input project. The new display type can be chosen from the combo box.
- ▶ **Center Objects** All displayed objects will be centered inside the new project screens.
- ▶ **Keep Aspect Ratio** Keeps the existing aspect ratio for objects.
- ▶ **Scale Objects** All objects will be resized to the new resolution (enlarged/downsized).
- ▶ **Scale Images** All images will be resized to the new resolution (enlarged/downsized).
- ▶ **Substitute Fonts** Tries to fix text sizes by substituting fonts inside the font family.
- ▶ **Zoom Fonts** Tries to fix text sizes by zooming fonts in integer values.
- ▶ **Add all SYS variables** Adds all new SYS variables used in TouchMaker 4.
- ▶ **Help** Shows this help window.
- ▶ **Convert** Starts converting the project.
- ▶ **Close** Closes the Project Converter.